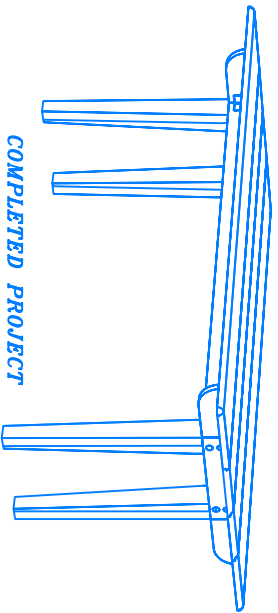


- Using one of your butt hinges as a template, chisel out the mortise for the hinges in pieces F and L as shown (Fig 4). Ensure you sand the top pieces D at 30 degree angle to each other or you will not be able to pre-drill through J and slightly into F with twelve 1/8" holes, six each. Glue and screw together with twelve #8 1 1/4" flathead screws. Pre-drill through the hinge and piece F with 1/8" holes where the holes line up when the hinge is inserted into the mortise. Attach the JF assembly to the table legs by screwing through the hinge and piece F into the table legs with #8 1 1/4" flathead screws, or with the hardware provided with the hinge providing it is long enough. You may wish to pre-drill into the leg with a 1/16" bit to prevent splitting. Pre-drill and countersink two 1/8" holes in each of the ends of pieces G, 1 1/2" in from the ends, countersink with a 3/8" drill with enough depth that you will be able to insert wood buttons. Glue and screw pieces G to the table legs with eight #8 1 1/4" flathead screws. We recommend this assembly be done with the legs upside down to ensure the top pieces C, if excess glue with the legs down, will not fall into the wood buttons and wipe off excess glue with the assembly still inverted. Place in piece H to ensure it fits. Remove and pre-drill with two 1/8" holes to intersect the leg, countersink. Place a bead of glue in the notch, and on each end, re-insert, and screw to the leg with two 1 1/4" screws. Pre-drill one hole in each of the ends so that a screw will intersect pieces F and G, countersink, and attach with two 1 1/4" screws. Repeat for each piece H. Attach pieces L by using #8 5/8" flathead screws through the hinge already attached to piece F. You will have to chisel slightly on the edge of G to allow for the hinge pin. Ensure that the top edges (now the bottom edges as the table is upside down) of F, G, H, E, and L remain flush throughout this procedure to ensure the table top will remain flat. Now wipe off excess glue, turn the table over, ensure the table remains square, and allow the glue to set for at least two hours.
- Pre-drill four equally spaced holes (2" spacing) in pieces K with a 1/8" drill bit and countersink these holes from the rounded side. Place pieces C and D upside down, glue the rabbet joint, ensure they are square and tight against each other. Use a pair of bar clamps to accomplish this, and screw on pieces K with twenty #8 1 1/4" screws as shown (Fig 5). Position A and B tight to this assembly and trace out where the hinges will attach. Drill four 3/8" dia. holes to attach wood buttons. Mortise out the hinge locations so that they will be flush, and attach with 5/8" screws ensuring the screws do not go through the other edge of the table top. The hinge should now operate as shown (Fig 6). Glue in the four wood buttons.
- From the top, drill five 1/8" holes down through each piece J. Pre-drill a similar hole in each H, 1/2" down, or 3/4" to intersect with the hole in the top. Piece H and J should be glued together and then screw on the table top. Ensure that the table top is centered, and screw on the table top from the bottom, with fourteen #8 1 1/4" flathead screws. Take great care that your screws do not go through the top surface of the table. Wipe off excess glue, ensuring no glue is near pieces L, and allow to dry.

On materials:

Use materials to match the rest of your dining room furniture. As this is a solid wood project, use top quality materials.

- Sand project and finish with stain and varnish, or oil.



COMPLETED PROJECT

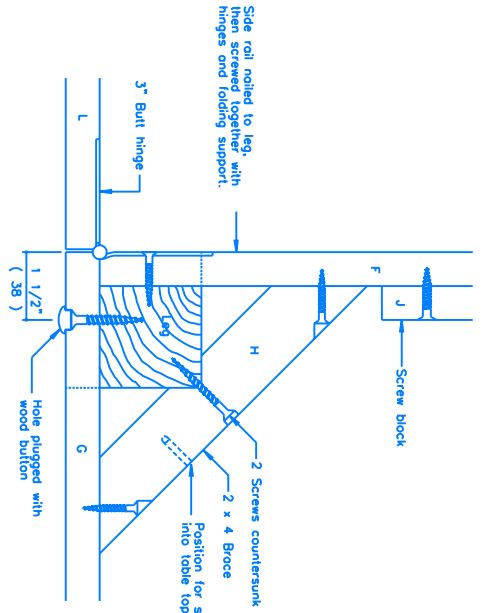


FIGURE 4

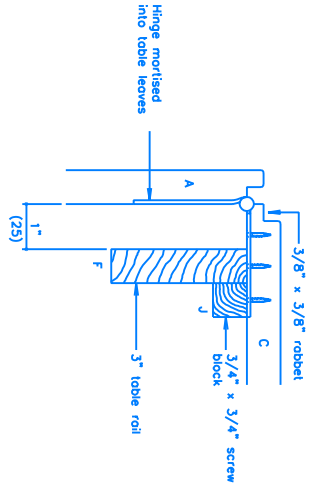


FIGURE 6

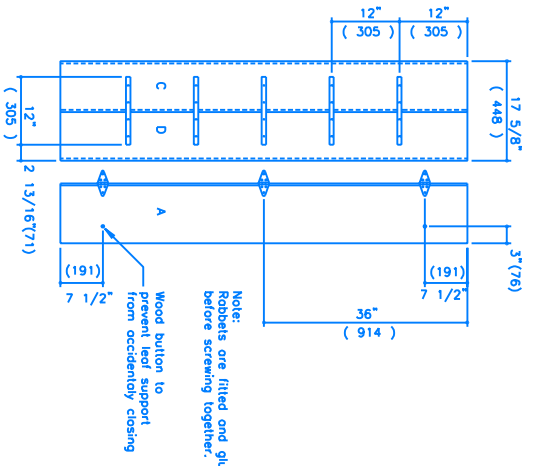
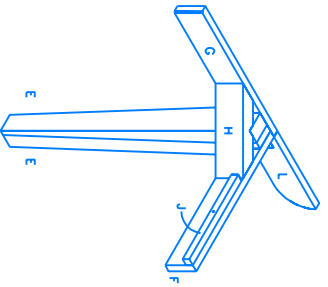
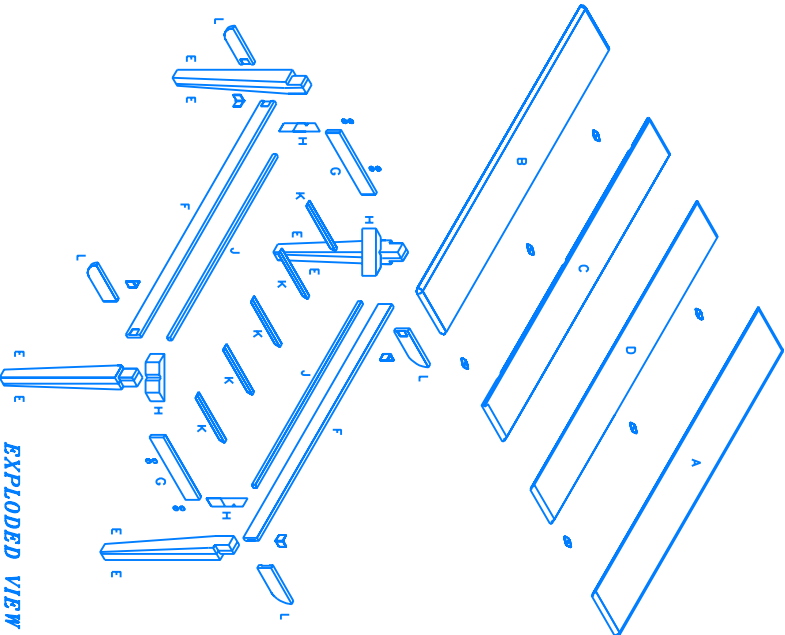


FIGURE 5



EXPLODED VIEW